

THE
CABOT
TECH PACK 2025



THEATER HISTORY; 104 Years and counting...

The Cabot Theatre is a national treasure on the North Shore of Massachusetts; a legacy of the visionary showmanship and architectural passion of the Ware Brothers. The theatre opened on December 8, 1920 as a dream palace for vaudeville and silent movies and it was hailed as “the most impressive auditorium of its size east of New York.” Known then as The Ware Theater, it shared a distinguished architectural pedigree, designed by the architects of Boston’s Athenaeum, Olympia Theater and The Strand Theater.

Venue Address: 286 Cabot Street, Beverly, MA 01915

www.TheCabot.org Phone: 978 927-3100

Production Manager: Andrew Dorr andrewdorr90@gmail.com

Operations: Jill Davidson jill@thecabot.org

Wheelchair Accessible Orchestra Level and Restrooms

SEATING CAPACITY: Current Total Capacity is **858** including:

- **816** Fixed Seats
- **40** Table Seats
- **2** dedicated Wheelchair Spaces

STAGE DIMENSIONS

- 29' 10" Wide at The Proscenium Arch
- 25' Deep from Front of Stage to Back Wall
- 26' High to the top of the Proscenium Arch
- 20' Deep to Upstage Traveler
- Stage Right Wing Space: 8' x 18'
- Stage Left Wing Space: 10' x 18'
- Exit to Front of House is located on stage left and through an enclosed walkway

LOAD-IN

Stage Door opens directly to Loading Pad at back parking lot.

Load-In via house ramp through Stage Door

DRESSING ROOMS

One small dressing room stage right at stage level with toilet and sink

One dressing room stage right up stairs

Three rooms on the elevator accessible second floor, with restrooms (no showers) and Washer/Dryer.

MERCH SHIPPING

If you plan to ship MERCH directly to The Cabot, please use the below information:

The Cabot
c/o Carla Scheri
ATTN: MERCH
286 Cabot Street
Beverly, MA 01915

If your Merch delivery requires a signature, please arrange delivery between Monday through Friday, between the hours of 10:00AM and 4:00PM. Weekend deliveries can be arranged on a per-case basis, as per advance.

THE
CABOT
TECH PACK 2025

STAGE POWER:

- 100 Amp Three-Phase Power Dedicated for AUDIO. Cam Lock Tie-In.
- 100 Amp Three-Phase Power Dedicated for LIGHTING. Cam Lock Tie-In.
- (16) 20 Amp Edison Outlets available for AUDIO
- (4) 30 Amp Edison Outlets available for AUDIO
- (24) 20 Amp Edison Outlets available for LIGHTING

SHORE POWER: (2) 60 amp circuits with 220 range plugs

VIDEO SYSTEM:

- (5) BIRD DOG PTZ P22 1080p 29.99 FPS
- (1) BIRD DOG PTZ Controller
- (1) HANABI FOR.A 16 Channel Video Switcher
- (1) ROLAND VR-40 4 Channel Video Switcher
- VERIZON FIBER OPTIC LINE (Speeds: 1G Up / 1G Down)

FILM PROJECTION:

- PROJECTOR: **BARCO SP2K-15S** (14K Lumens)
- SCREEN: **DRAPER PARAGON 30' x 14.5'**
Roll Down Screen; 6' from Downstage Edge
- Lens-to-Screen Distance: 100'
- Screen Size: 28' wide x 12'7" high

MICROPHONES and STANDS

- Full SHURE Microphone Package
- Full AUDIX Drum Microphone Package
- (20) Heavy Duty Round Base Microphone Stands (Tall Boom and Straight)
- (8) Tall Tripod Boom Microphone Stands

THE
CABOT
TECH PACK 2025

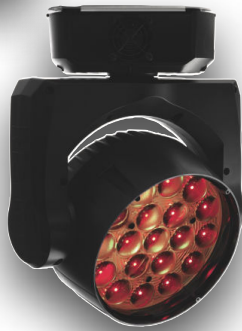
**THEATER
LIGHTING
SYSTEM**



(6) Martin ELP CL



(4) MAC 250 ENTOUR



(6) MAC AURA



**(8) HIGH END
SolaFrame 750**



(4) MAC 250 WASH



(1) RADIANCE HAZER



ROAD HOG 4 Console

THEATER AUDIO SYSTEM

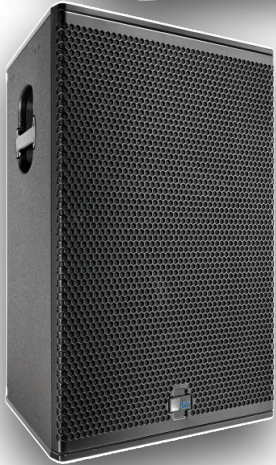
THE CABOT TECH PACK 2025



(6) MEYER SOUND M'ELODIE
Ultra Compact High Power Curvilinear Array Loudspeaker
(Flown above Stage; 6 per Side)



(6) MEYER SOUND LINA
Compact Linear Line Array Loudspeaker
(Flown above Stage; 6 per side)



(2) MEYER SOUND UPQ-ID
Wide Coverage Loudspeaker
Front Fills
on Floor of Stage



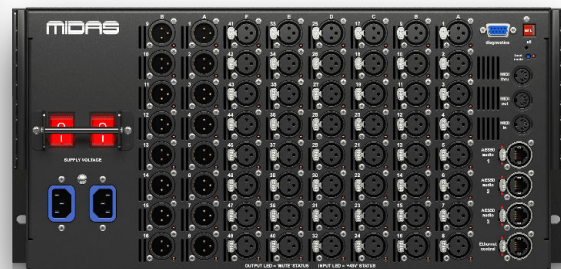
(4) MEYER SOUND 700-HP
on Floor L&R of Stage; 2 per side



**MIDAS HERITAGE-D
HD 96-24**
FOH Console



MEYER SOUND GALILEO GALAXY
System Processor



MIDAS DL251 Stage Box

THE
CABOT
TECH PACK 2025

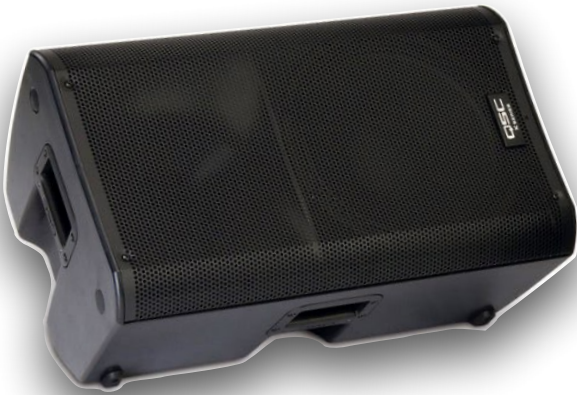
**THEATER
STAGE MONITORING
SYSTEM**



(2) MEYER SOUND MJF-210



(4) EV SXA 250



(2) QSC K12



(4) MACKIE 400



AVID SC48 Monitor Console

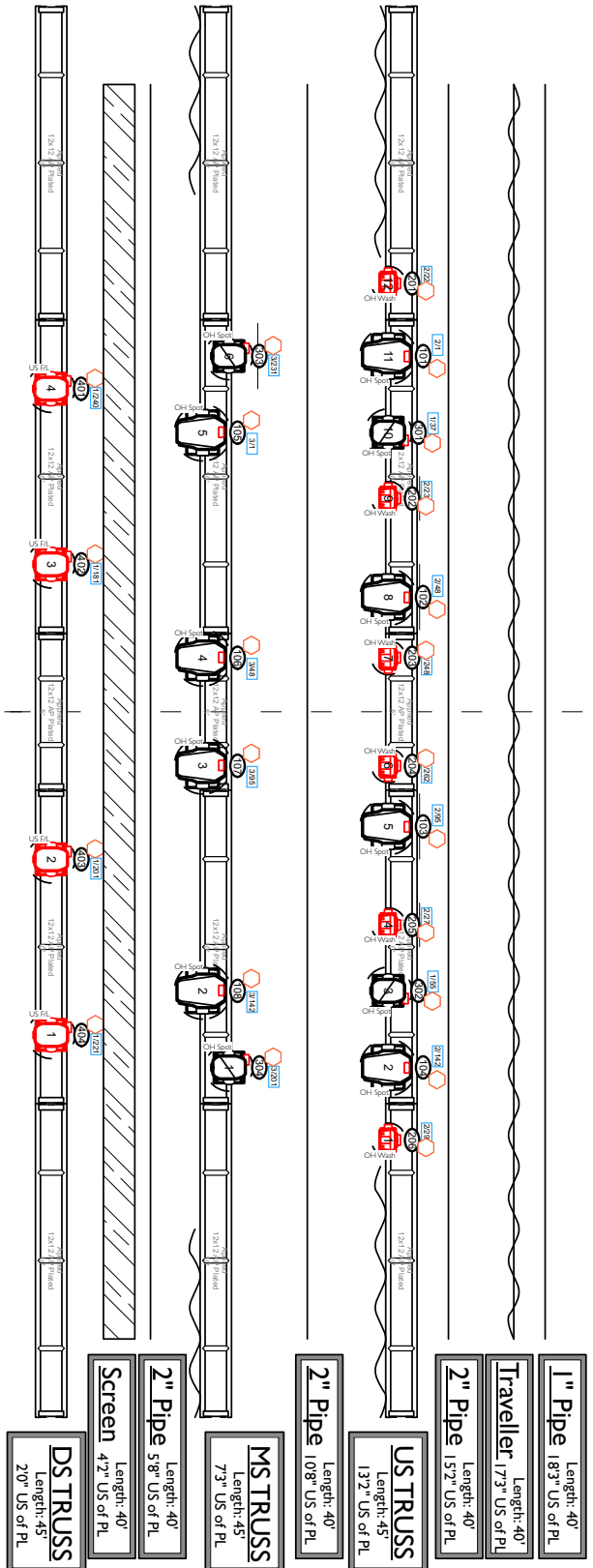
THE
CABOT
TECH PACK 2025

The Cabot Theatre
Lighting Information Packet
Updated 2/6/2025 by John Holmes

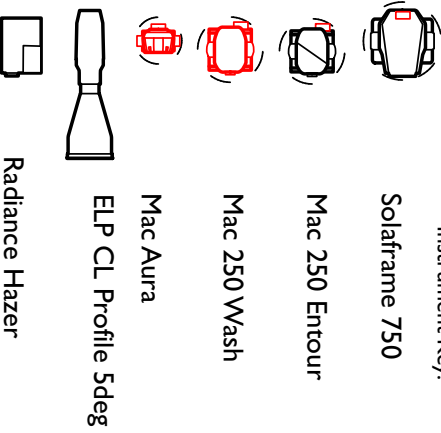
Notes:

1. The Cabot has a fully intelligent lighting system with no (0) dimmers available. All instruments are LED or arc source.
2. Our console is a Road Hog 4, updated to HogOS 4.1.0. At the console, we have a keyboard, trackball mouse, and one (1) standard monitor (not touchscreen).
3. We have four universes of DMX run to the stage, all through physical DMX. The lighting system does not use networking; we do not have any nodes or gateways, and lighting does not have an ethernet run from FOH to the stage. There is a cable path to do so on as necessary per show.
4. We have six (6) FOH Ellipsoidals. They are at the back of the house above the balcony, accessed from the back of the balcony, and can be focused as requested per show. The fixtures are Martin ELP CL fixtures with 5 degree lenses.
5. Overstage, we have three (3) trusses. The DS Truss has four (4) Mac 250 Washes, the MS Truss has four (4) Solaframe 750s and (2) Mac 250 Entours. The US Truss has four (4) Solaframe 750s, (2) Mac 250 Entours, and (6) Mac Auras. These fixtures are hung as the rep plot and cannot move to the ground or move to different locations on the truss.
6. The Cabot does NOT have any extra fixtures in house to use as a ground package.
7. Our lighting distro is an Indu-Electric PD with 24 Edison circuits, 12 of which are used in the rep plot. The lighting disconnect is 100A, 3 phase, and our distro has Camlock Pass-Thru, which can be used to add an additional distro.
8. We have two followspots at the back of the house; they have 250w tungsten lamps, and there is a com line running up to the spot booth.
9. We have a very limited inventory of Edison and DMX available.
10. Vectorworks and lightwright files available upon request.

THE
CABOT
TECH PACK 2025

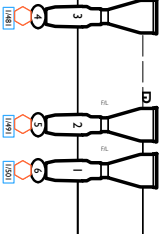


Instrument Key:



FOH PIPE

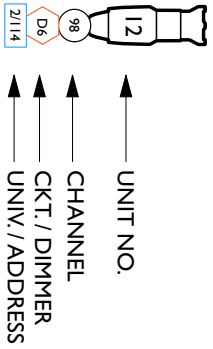
Note: Dead Hung. Drawn out of Position
Approximately 89' throw from FOH Pipe to Sage
Actual Position is 59.9' from end to end



Project/Show:

The Cabot

Typical:



p. 847-347-5846
e. johnholmesdesign@gmail.com

Plate Name:
Light Plot

Date:
9/11/24

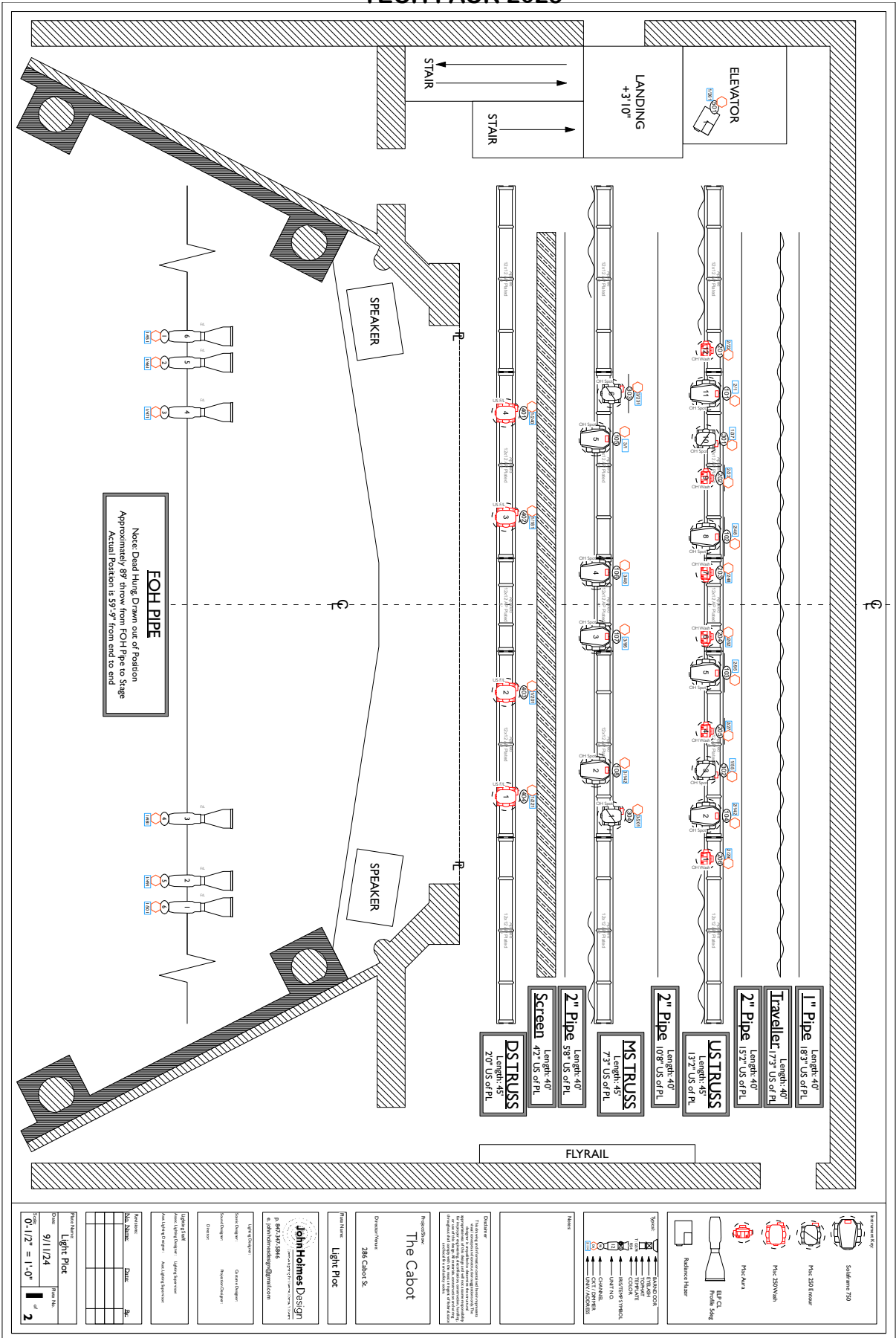
Scale:
1:64

Plate No.

2 of **2**

THE CABOT

TECH PACK 2025



<p>Part Name Light Plot</p> <p>Date 9/11/24</p> <p>Scale 0-1/2" = 1'-0"</p> <p>Page No. 2 of 2</p>	<p>Author John Holmes</p> <p>Designer John Holmes</p> <p>Checker John Holmes</p> <p>Revised By None</p> <p>Revised Date None</p>	<p>Client The Cabot</p> <p>Project Name The Cabot</p> <p>Project Number 286 Cabot 25</p>	<p>Company John Holmes Design</p> <p>Address P.O. Box 247, 2844 Johns Creek, GA 30153</p> <p>Phone 770.424.8844</p> <p>Email johndesign@johndesign.com</p>	<p>Notes</p> <p>1. This set is for production and is not to be used for any other purpose.</p> <p>2. All dimensions are in feet and inches unless otherwise specified.</p> <p>3. All materials are to be new unless otherwise specified.</p> <p>4. All materials are to be of the highest quality.</p> <p>5. All materials are to be of the highest quality.</p> <p>6. All materials are to be of the highest quality.</p>	<p>Legend</p> <ul style="list-style-type: none"> 1" Pipe 2" Pipe MS TRUSS US TRUSS Traveller Screen DSTRUSS FLYRAIL SPEAKER STAIR ELEVATOR LANDING
--	---	---	--	---	---

TRUSS WEIGHTS

(In Pounds)

	DS TRUSS	MS TRUSS	US TRUSS
Truss (Bare)	291.0	291.0	291.0
Motors	440.0	440.0	440.0
Solaframes	-	252.0	252.0
MAC 250 Entours	-	98.8	98.8
MAC 250 Washes	202.0	-	-
MAC Auras	-	-	86.4
Mega Claws	16.0	24.0	36.0
Cable (lx and motor)	100.0	100.0	100.0
Worklights	-	25	-
TOTALS:	1049	1230.8	1304.2
Individual Unit Weights			
SolaFrame 750		63.0 lbs	
Stagemaker 1ton		110.0 lbs	
10' stick AP Plated Truss		63.0 lbs	
5' stick AP Plated Truss		39.0 lbs	
MAC 250 Entour		49.4 lbs	
MAC 205 Wash		50.5 lbs	
MAC Aura		14.4 lbs	
Mega Claw		2.0 lbs	



TECH PACK 2025

Channel Hookup

The Cabot

Page 1 of 2

9/11/24

LD: John Holmes
847-347-5846
johnholmesdesign@gmail.com

The Cabot.lw6
PM: Andrew Dorr
617-285-7422
production@thecabot.org

Table with 8 columns: Channel, Instrument Type & Load, Purp, Univ, Addr, Pos & Unit#, User 1, Dx. Rows include items (1) through (204) with details on instrument type, purpose, and location.

THE
CABOT
TECH PACK 2025

The Cabot

Channel Hookup

Page 2 of 2

9/11/24

The Cabot.lw6

Channel	Instrument Type & Load	Purp	Univ	Addr	Pos & Unit#	User 1	Dx
(205)	Martin Mac Aura	OH Wash	2	2/276	US Truss #4	Standard	14
(206)	Martin Mac Aura	OH Wash	2	2/290	US Truss #1	Standard	14
(301)	Martin MAC 250 Entour 250w	OH Spot	1	1/37	US Truss #10	Extended	18
(302)	Martin MAC 250 Entour 250w	OH Spot	1	1/55	US Truss #3	Extended	18
(303)	Martin MAC 250 Entour 250w	OH Spot	3	3/231	MS Truss #6	Extended	18
(304)	Martin MAC 250 Entour 250w	OH Spot	3	3/201	MS Truss #1	Extended	18
(401)	Martin MAC 250 Wash 250w	US F/L	1	1/240	DS Truss #4	Extended	19
(402)	Martin MAC 250 Wash 250w	US F/L	1	1/181	DS Truss #3	Extended	19
(403)	Martin MAC 250 Wash 250w	US F/L	1	1/201	DS Truss #2	Extended	19
(404)	Martin MAC 250 Wash 250w	US F/L	1	1/221	DS Truss #1	Extended	19
(501)	UltratecFX Radiance Hazer 500w		1	1/261	Elevator #1	2ch	1



THE
CABOT
 TECH PACK 2025

CABOT THEATER BACKLINE PULL SHEET

ITEM
Yamaha Recording Custom Kick Drum 22x18
Yamaha Recording Custom Kick Drum 20x16
Yamaha Recording Custom Rack Tom 10 Inch
Yamaha Recording Custom Rack Tom 12 Inch
Yamaha Recording Custom Rack Tom 13 Inch
Yamaha Recording Custom Floor Tom 14 Inch
Yamaha Recording Custom Floor Tom 16 Inch
Yamaha Recording Custom Snare Wood 14 x 5.5
Yamaha Recording Custom Snare Stainless Steel 14 x 5.5
Yamaha HS-1200 Series Two Single One Double Braced Hi Hat Stand
Yamaha DFP-9D Professional Direct Drive Double Bass Pedal
Drum Workshop Collectors Series Kick Drum 22 x 16
Drum Workshop Collectors Series Kick Drum 20 X18
Drum Workshop Collectors Series Kick Drum 18 X 14
Drum Workshop Collectors Series Kick Drum 24 X 18
Drum Workshop Collectors Series Rack Tom 10
Drum Workshop Collectors Series Rack Tom 12
Drum Workshop Collectors Series Floor Tom 14 Inch
Drum Workshop Collectors Series Floor Tom 16 Inch
Drum Workshop Collectors Series Floor Tom 18 Inch
Drum Workshop Collectors Series Snare Tom 14 x 6.5
Drum Workshop Collectors Series Snare Tom 14 x 5
Drum Workshop DW 9000 Double Bass Pedal Chain Drive
Drum Workshop DW 500 Single Bass Drum Pedal Chain Drive
Drum Workshop DW 9000 Boom Cymbal Stand
DW 9000 Hi Hat Stand W/ Short/Long Arm
DW Dog Bone Short Arm Cymbal Mount
Drum Workshop DW 9000 Snare Stand
Pearl Masters Maple Complete Kick Drum 22 x 18
Pearl Masters Maple Complete Rack Tom 10 x 8
Pearl Masters Maple Complete Rack Tom 12 x 8

CABOT THEATER BACKLINE PULL SHEET

Pearl Masters Maple Complete Rack Tom 12 x 9
Pearl Masters Maple Complete Rack Tom 14 x 11
Pearl Masters Maple Complete Floor Tom 14 x 14
Pearl Masters Maple Complete Floor Tom 16 x 15
Pearl Masters Maple Complete Snare Drum 14 x 5
Pearl Gyro Lock Tom Rack Mount Stand
Iron Cobra Single Chain Drive Pedal
Zildjian K Custom Dark 14 Inch Hi Hat Cymbals
Zildjian K Custom Dark 16 Inch Crash Cymbal
Zildjian K Custom Dark 17 Inch Crash Cymbal
Zildjian K Custom Dark 20 Inch Ride Cymbal
Slingerland Pro Series 20 x 16 Kick Drum
Slingerland Pro Series 12 Inch Rack Tom
Slingerland Pro Series 14 Inch Floor Tom
Aguilar DB410 8 Ohm Bass Cab
Aguilar DB751 Class A Bass Head
Aguilar Tonehammer 500
Ampeg SVT Classic 300 Watt Bass Head
Ampeg SVT 810 Bass Cab
Ampeg SVT 610 Bass Cab
Fender Reverb Deluxe Black Guitar Amplifier
Fender Reverb Deluxe 68 Reissue Cream Guitar Amplifier
Roland JC-120 Guitar Amplifier
Roland 25 Watt Key Amplifier
Wurlitzer 214 Electric Piano W/ 2 14 Inch Speaker Cabinet
Nord Stage 3 88 Weighted Key Keyboard
X Stand Keyboard Stand
Dual Tier Heavy Duty Keyboard Stand
Shure PSM 1000 Transmitters PT101
Shure PSM 1000 Receivers PT101
Shure Axient Digital 4 CH Wireless Microphone Transmitter
Shure Axient Digital AD 1 Body Packs

CABOT THEATER BACKLINE PULL SHEET

Shure Axient Digital AD 1 Handhelds
Shure UR4D 2 Channel Wireless Microphone Transmitter
Shure UR4D UR4 Handheld
Shure UR4D Body Pack
Waves LV1 64 Channel Audio Console
Meyer Sound MJF 210 Monitor Speaker
2 QSC K12 Monitor Speaker
Yamaha Recording Custom Real Wood
Drum Workshop Collectors Series Pale Blue Oyster
Pearl Masters Maple Complete Champagne Burst
(4) Shure PSM 1000 (16 Stereo Channels)



FREQUENCY COORDINATION PARAMETERS

MODEL	BAND	CHANNEL NAME	DEVICE ID	GROUP & CHANNEL	FREQUENCY
AD4Q-A/Standard	G57+	Channel1	[AD4Q-A]	G:-- Ch:--	603.000 MHz
AD4Q-A/Standard	G57+	Channel2	[AD4Q-A]	G:-- Ch:--	605.200 MHz
AD4Q-A/Standard	G57+	Channel3	[AD4Q-A]	G:-- Ch:--	605.700 MHz
AD4Q-A/Standard	G57+	Channel4	[AD4Q-A]	G:-- Ch:--	614.375 MHz
PSM1000	G10	Dave	[P10T-1]	G:-- Ch:--	534.500 MHz
PSM1000	G10	Nick	[P10T-1]	G:-- Ch:--	537.950 MHz
PSM1000	G10	Adam	[P10T-2]	G:-- Ch:--	538.475 MHz
PSM1000	G10	Ben	[P10T-2]	G:-- Ch:--	536.725 MHz
PSM1000	G10	Coleman	[P10T-3]	G:-- Ch:--	533.650 MHz
PSM1000	G10	Cue	[P10T-3]	G:-- Ch:--	488.275 MHz
PSM1000	G10	Guest 1	[P10T-4]	G:-- Ch:--	473.325 MHz
PSM1000	G10	Guest 2	[P10T-4]	G:-- Ch:--	533.225 MHz



FREQUENCY COORDINATION PARAMETERS

TYPE	SOURCE	FREQUENCY
Range	Scan	471.216 MHz - 471.442 MHz
Single	Scan	471.375 MHz
Range	Scan	477.492 MHz - 477.747 MHz
Single	Scan	477.675 MHz
Range	Scan	478.571 MHz - 478.818 MHz
Single	Scan	478.750 MHz
Range	Scan	479.362 MHz - 479.627 MHz
Single	Scan	479.550 MHz
Range	Scan	482.316 MHz - 482.753 MHz
Single	Scan	482.675 MHz
Range	Scan	487.208 MHz - 487.490 MHz
Single	Scan	487.300 MHz
Range	Scan	490.986 MHz - 491.255 MHz
Single	Scan	491.175 MHz
Range	Scan	493.298 MHz - 493.436 MHz
Range	Scan	495.866 MHz - 496.025 MHz
Range	Scan	496.117 MHz - 496.372 MHz
Single	Scan	496.300 MHz
Range	Scan	499.160 MHz - 499.437 MHz
Single	Scan	499.300 MHz
Range	Scan	500.202 MHz - 501.118 MHz
Range	Scan	501.136 MHz - 502.217 MHz
Range	Scan	502.375 MHz - 502.618 MHz
Range	Scan	502.748 MHz - 503.636 MHz
Range	Scan	503.856 MHz - 504.205 MHz



FREQUENCY COORDINATION PARAMETERS

TYPE	SOURCE	FREQUENCY
Range	Scan	504.304 MHz - 504.938 MHz
Range	Scan	505.355 MHz - 505.469 MHz
Range	Scan	506.200 MHz - 509.661 MHz
Range	Scan	509.686 MHz - 511.530 MHz
Range	Scan	512.325 MHz - 512.393 MHz
Range	Scan	512.425 MHz - 513.162 MHz
Range	Scan	513.550 MHz - 513.706 MHz
Range	Scan	513.950 MHz - 513.975 MHz
Range	Scan	514.100 MHz - 514.259 MHz
Range	Scan	515.100 MHz - 515.350 MHz
Range	Scan	515.637 MHz - 515.730 MHz
Range	Scan	516.012 MHz - 516.844 MHz
Range	Scan	517.010 MHz - 517.640 MHz
Range	Scan	518.222 MHz - 518.396 MHz
Range	Scan	518.745 MHz - 519.025 MHz
Range	Scan	520.458 MHz - 521.420 MHz
Range	Scan	521.560 MHz - 523.691 MHz
Range	Scan	524.070 MHz - 524.267 MHz
Range	Scan	524.627 MHz - 524.867 MHz
Single	Scan	524.800 MHz
Range	Scan	525.224 MHz - 525.413 MHz
Range	Scan	525.522 MHz - 525.669 MHz
Range	Scan	526.036 MHz - 526.298 MHz
Single	Scan	526.225 MHz
Range	Scan	526.625 MHz - 526.868 MHz



FREQUENCY COORDINATION PARAMETERS

ITEM	SOURCE	FREQUENCY
Single	Scan	526.800 MHz
Range	Scan	527.223 MHz - 527.413 MHz
Range	Scan	527.502 MHz - 527.684 MHz
Range	Scan	528.073 MHz - 528.261 MHz
Range	Scan	528.649 MHz - 528.835 MHz
Range	Scan	548.200 MHz - 548.200 MHz
Range	Scan	548.233 MHz - 548.266 MHz
Range	Scan	548.287 MHz - 548.312 MHz
Range	Scan	548.350 MHz - 548.350 MHz
Range	Scan	548.400 MHz - 548.400 MHz
Range	Scan	549.140 MHz - 549.262 MHz
Range	Scan	550.233 MHz - 550.385 MHz
Range	Scan	550.816 MHz - 550.887 MHz
Range	Scan	550.906 MHz - 551.085 MHz
Range	Scan	551.150 MHz - 551.150 MHz
Range	Scan	551.200 MHz - 552.895 MHz
Range	Scan	553.070 MHz - 553.078 MHz
Range	Scan	555.481 MHz - 555.620 MHz
Range	Scan	556.162 MHz - 556.175 MHz
Range	Scan	557.418 MHz - 557.672 MHz
Single	Scan	557.600 MHz
Range	Scan	558.887 MHz - 559.057 MHz
Range	Scan	559.470 MHz - 559.626 MHz
Range	Scan	560.213 MHz - 565.761 MHz
Range	Scan	572.079 MHz - 577.894 MHz



FREQUENCY COORDINATION PARAMETERS

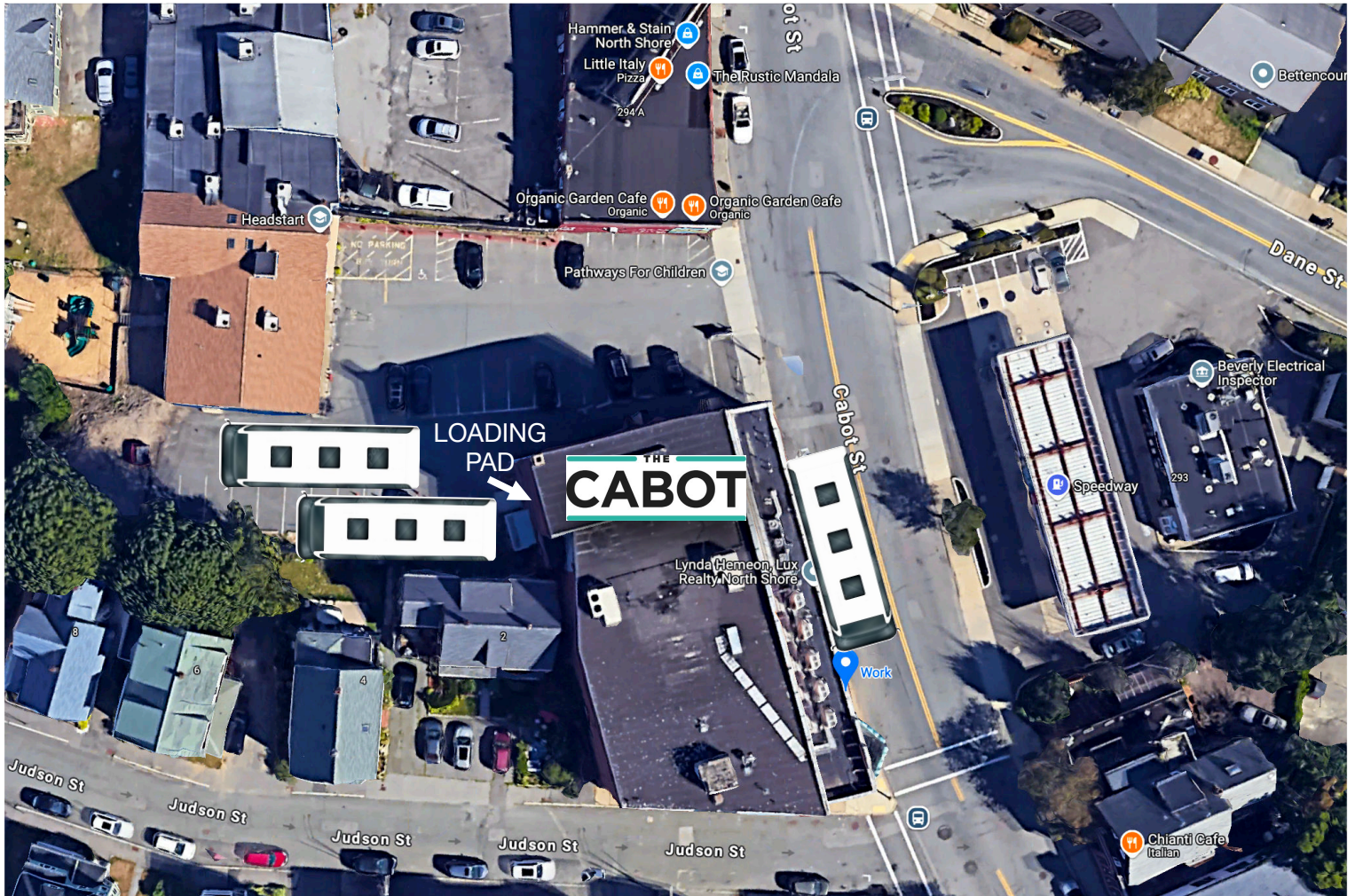
ITEM	SOURCE	FREQUENCY
Range	Scan	578.256 MHz - 578.382 MHz
Range	Scan	578.515 MHz - 581.343 MHz
Range	Scan	582.018 MHz - 583.691 MHz
Range	Scan	584.212 MHz - 587.746 MHz
Range	Scan	587.918 MHz - 588.155 MHz
Range	Scan	588.343 MHz - 588.670 MHz
Range	Scan	588.683 MHz - 589.225 MHz
Range	Scan	589.389 MHz - 589.680 MHz
Range	Scan	590.219 MHz - 590.394 MHz
Range	Scan	591.225 MHz - 591.225 MHz
Range	Scan	591.300 MHz - 591.337 MHz
Range	Scan	591.502 MHz - 591.800 MHz
Range	Scan	591.950 MHz - 592.362 MHz
Range	Scan	592.708 MHz - 594.081 MHz
Range	Scan	594.109 MHz - 595.815 MHz
Range	Scan	596.211 MHz - 599.345 MHz
Range	Scan	599.441 MHz - 601.685 MHz
Range	Scan	612.398 MHz - 612.401 MHz

BUS PARKING

286 Cabot Street
Beverly, MA 01915

THE
CABOT

42° 33' 5.67" N
70° 52' 45.0624" W



**Bus / Truck Parking Restrictions only for dates
between September 1 through May 30**

Bus parking is dependent on Arrival Time. We share our parking lot with the “Pathways for Children” Pre-School next door. If you plan to arrive between 7:00am and 2:00pm, you will need to park in front the theatre on Cabot Street. If you plan to arrive between 2:30pm and 6:30am, you can park behind the theatre near the Loading Pad as shown above.

THE CABOT



MAIN ENTRANCE and FRONT OF VENUE



VIEW FROM BALCONY CENTER

THE CABOT



VIEW FROM AUDIENCE LEFT

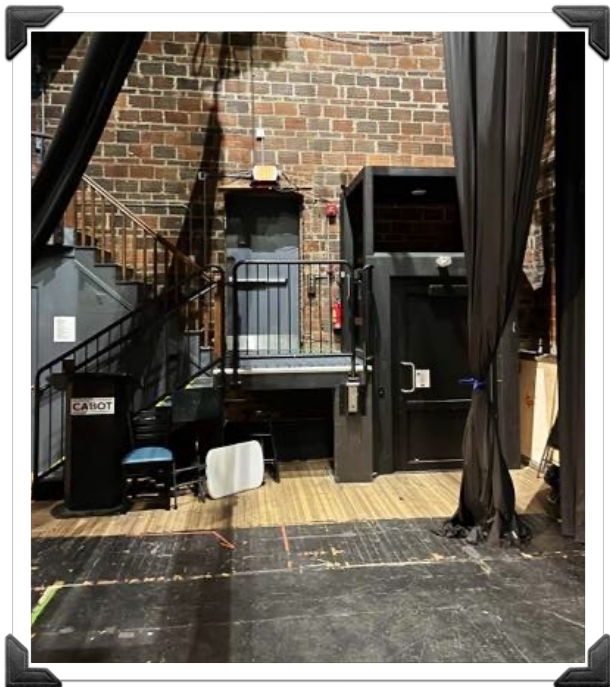


VIEW FROM AUDIENCE RIGHT (FOH LOCATION)

THE CABOT



VIEW FROM STAGE

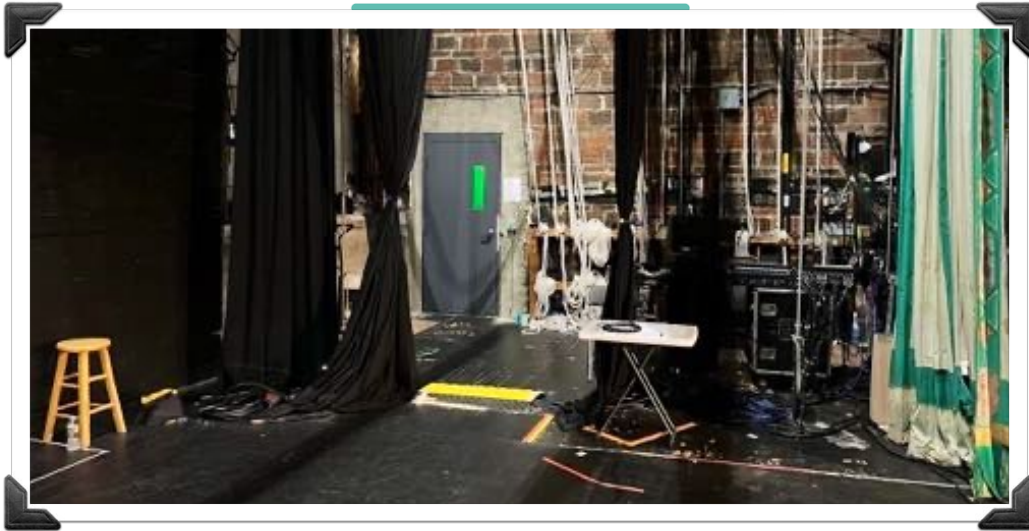


**STAGE RIGHT DOOR
WITH LIFT**

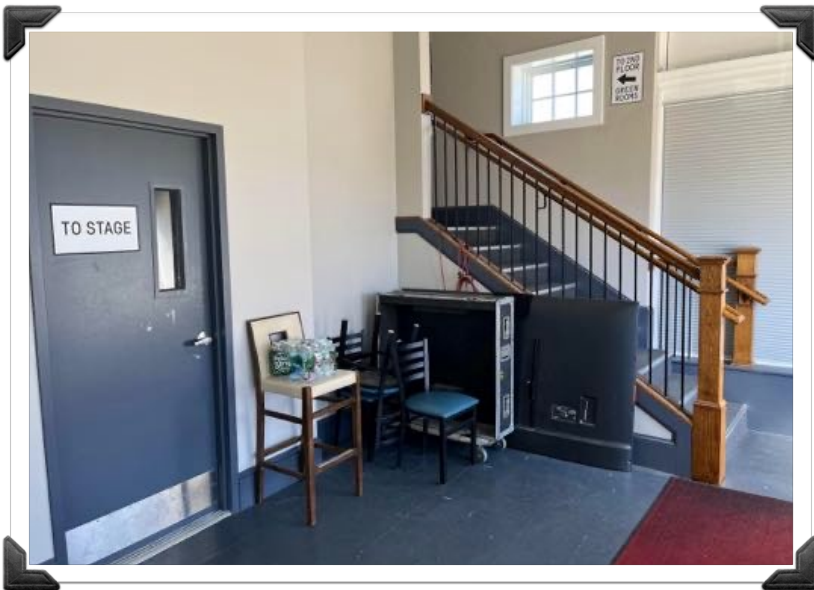


**STAGE LEFT HALL
TO AUDIENCE**

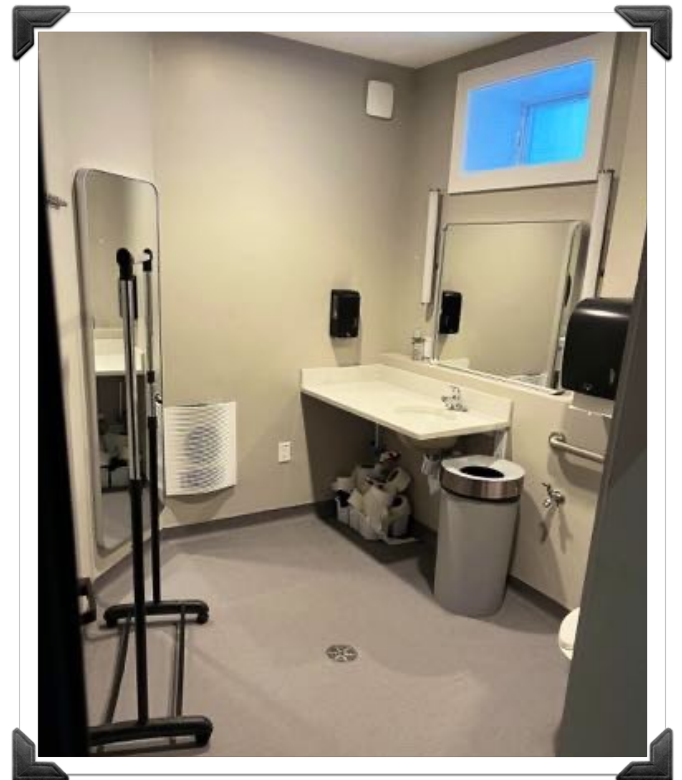
THE CABOT



STAGE LEFT DOOR TO SECOND FLOOR GREENROOMS



**STAIRS TO SECOND FLOOR
GREENROOM**



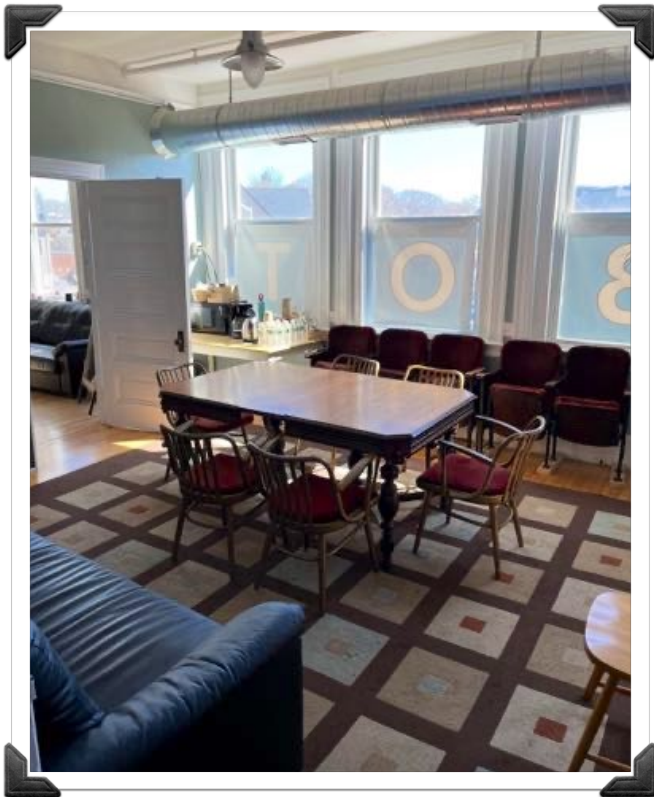
**STAGE RIGHT RESTROOM
AT STAGE LEVEL**



STAGE RIGHT GREENROOM

THE CABOT

SECOND FLOOR GREENROOMS

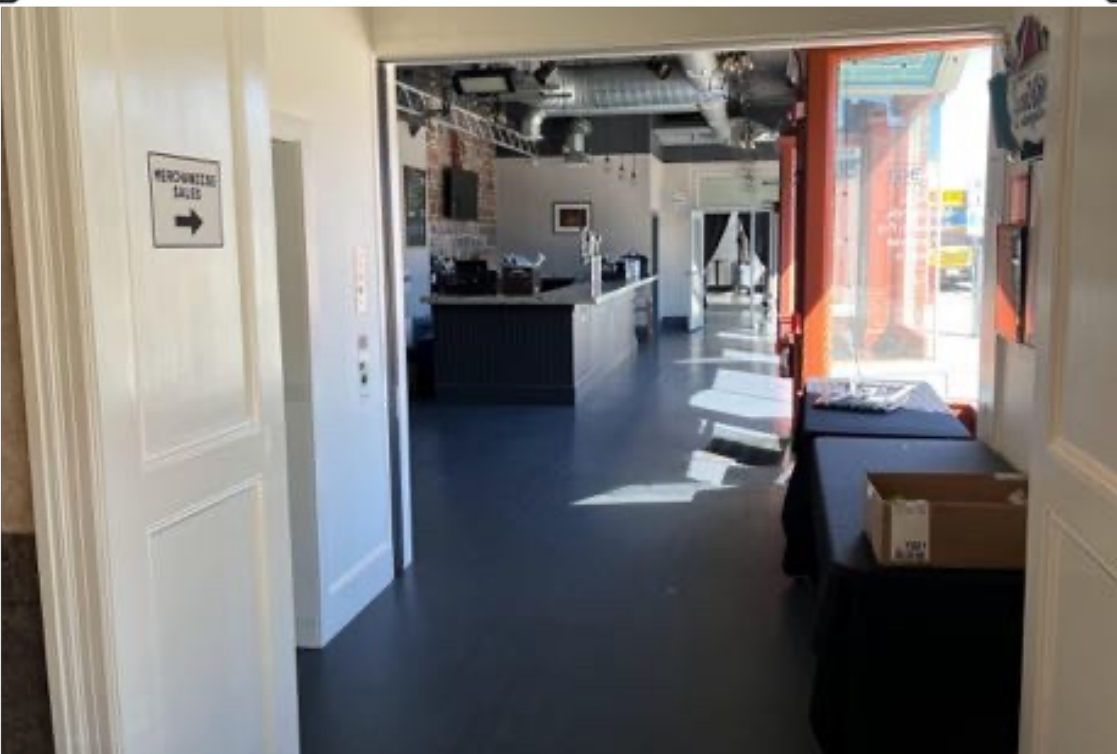


SECOND FLOOR GREENROOMS ARE ACCESSED BY A PRIVATE STAIRWAY AND A ELEVATOR THAT IS SHARED WITH THE PUBLIC

THE CABOT



MAIN LOBBY CONCESSIONS AND LOBBY BAR



MAIN LOBBY TO ENTRANCE TO STREETSIDE BAR AND MERCH LOCATION